



MODEL TEDR-2000

1-TON HOIST & RAIL

GENERAL DESCRIPTION

Cleanroom hoist products are well-suited for lifting applications in wash-down environments. These stainless steel chain hoists feature: sealed gearing, food-grade lubrication, and stainless steel hooks, chains, frames, and trolleys. Designed for applications that require USDA approved or food-grade hoists. All products are made in the U.S.A.



Tucs Model TEDR-2000



TEDR-2000 in use.

CERTIFICATIONS

CSA/LR38324 and CAGI



TUCS Equipment, Inc.
755 County Road 18 S. • Princeton MN 55371
Phone 763-574-7475 Fax 763-574-7472
www.tucsequipment.com

ITEM NO.

PROJECT

QUANTITY

AIA NO.

CONSTRUCTION & FEATURES

304/316 Series Stainless Steel construction ■ Stainless Steel gearbox casing and shafts ■ Food-Grade chain and gearbox lubrication ■ 304 Series stainless steel chain ■ Stainless steel forged safety swivel hook ■ Stainless steel chain container ■ Type 304 Stainless steel including all hanging hardware but not sway braces

CONTROLS

NEMA 4X stainless steel enclosure ■ NEMA 4X push-button pendant ■ Emergency Upper limit switch ■ NEMA 4X stainless steel motor brake

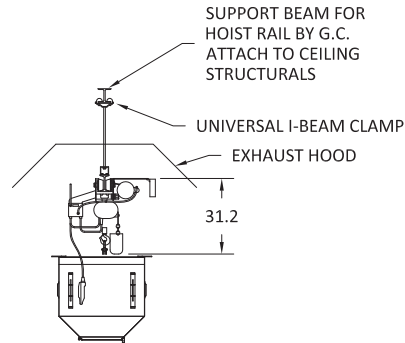
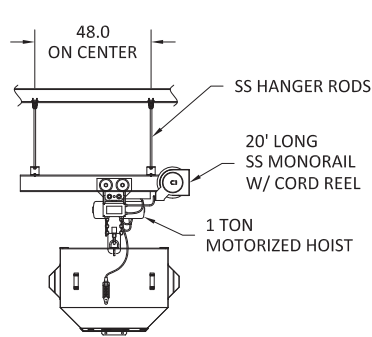
OPTIONS

- Voltage 208/240/60-3
- Voltage 460/480/60-3
- I-Beam length per consultant's floor plan
- Verify lifting height for proper clearance above kettles

MODEL TEDR-2000

1-TON HOIST & RAIL

Scan this QR code with your smart phone to visit our website for more information.

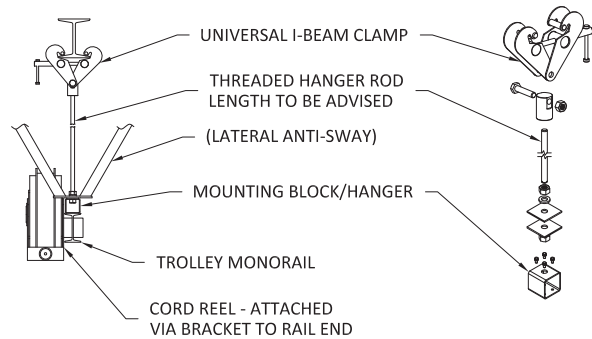


1 TON HOIST

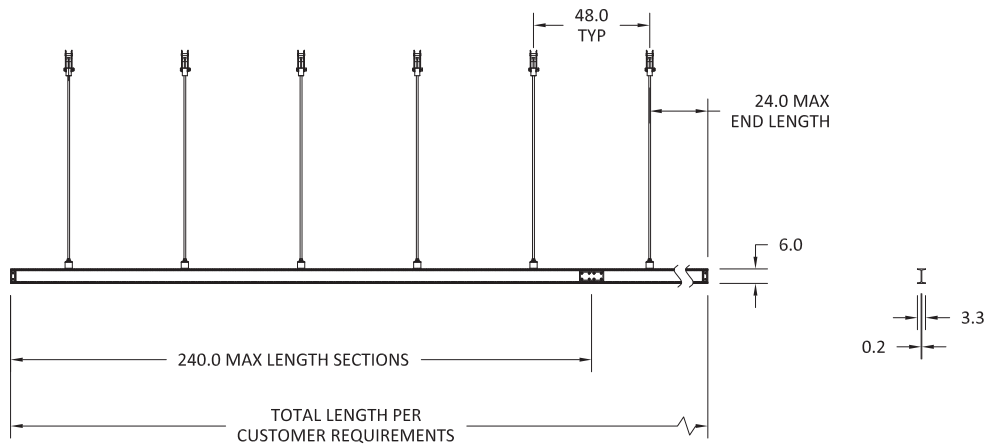
CAPACITY: 2000 LBS
 LIFT HEIGHT: 10 FEET
 TROLLY SPEED: 60 FPM (SINGLE SPEED)
 SOFT START FOR TROLLY INCLUDED
 LIFT SPEED: 20 FPM (SINGLE SPEED)
 TRAM RAIL SIZE: S6 I-BEAM (3.33 FLANGE)
 STAINLESS STEEL MOTOR, BRAKE, AND GEARBOX WITH FOOD GRADE LUBRICATION
 NEMA 4X STAINLESS STEEL ENCLOSURE WITH CONTROLS
 5 BUTTON (E-STOP/UP/DN/FWD/REV) NEMA 4X PENDANT WITH 8 FOOT DROP
 PADDLE STYLE UPPER LIMIT SWITCH
 TRAM RAIL FINISH: GLASS BEAD BLAST
 VOLTAGE: 230/3/60

NOTES

1. UNIVERSAL CLAMP, HANGER RODS, AND END STOPS PROVIDED LOOSE BY TUCS EQUIPMENT.
2. CEILING BEAM, MONORAIL, AND KETTLE AXES MUST BE PARALLEL AND ALIGN VERTICALLY.



HANGER DETAIL



1/5/2023

Due to continuous improvements, specifications subject to change without notice.

© 2023 TUCS Equipment. All Rights Reserved. Printed in the USA.