

LINE OF QUALITY FOOD AND BAKERY PROCESSING EQUIPMENT

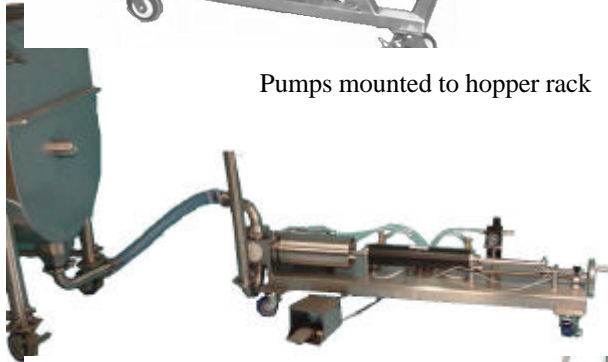
Item No. _____

**MODEL: See Sheet 2
VOLUMETRIC PISTON
FILLERS AND
ACCESSORIES**

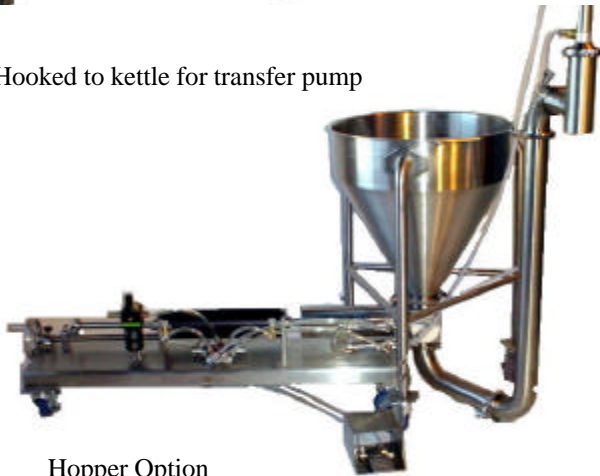
AIA 11400—FOOD SERVICE EQUIPMENT



Pumps mounted to hopper rack



Hooked to kettle for transfer pump



Hopper Option

BASIC FUNCTIONS

- Transfer Pump for Customers using tubs and other containers (not pouches)
- Fast Transfer (prior to packaging of any kind) from kettle to kettle or kettle to pack-off tank
- Form a complete package with addition of other Tucs components such as Hoppers, Augers, weight scales, as a means of delivering pumpable food products from +200 Deg F down to +40 Deg F into bottles, cans, trays, pans, or cartons

FEATURES

- U.S.D.A and F.D.A approved, 3A dairy standards
 - Versatile—Move sauces to dough & other high viscosity products
 - Locking casters or stationary mount
 - Hose-down easily cleanable without tools
- Minimum of 80 psi air pressure required

CONSTRUCTION AND CONTROLS

- Corrosion Resistant 316 stainless steel product contact areas

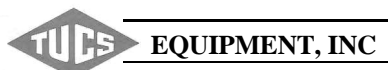
ACCESSORIES

- Hoppers—custom made of heavy gauge stainless steel in most any size. Available with agitators or augers.
- Packing tanks – with heating or chilling
- Floor casters, tables, stands or cabinets.
- Delivery nozzles in configurations for dripless dispensing in a variety of shapes and sizes.

Contact Factory for proper sizing according to product requirements.

The Tucs Volumetric Piston Filler is U.S.D.A accepted, and F.D.A compliant .

Consultant and Contractor Approvals

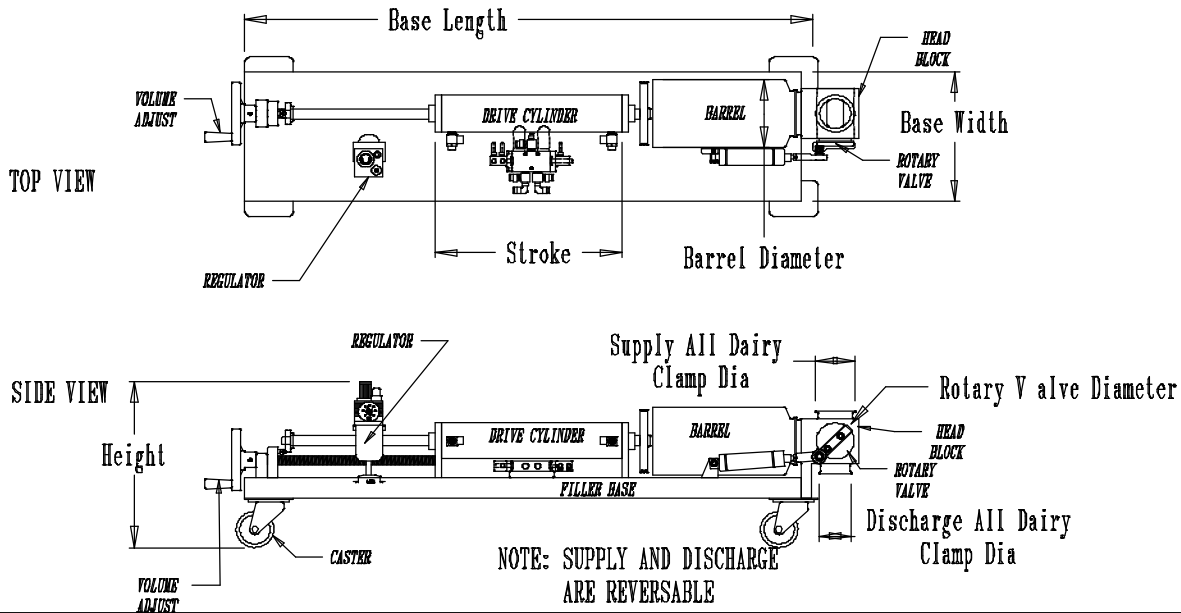


5301 Industrial Blvd., Suite 200
Fridley, MN 55421

Phone: (763) 574-7475
Fax: (763) 574-7472
Email: martytucs@tucsequipment.com

MODEL: See Below

VOLUMETRIC PISTON FILLER



Model Number	Rotary Valve Diameter	Barrel Cylinder Diameter	Capacity Approximate Water Wt.	Supply All Dairy Clamp Type	Discharge All Dairy Clamp Type	Length	Width	Height
TC 6x21-04	2-1/4"	1/2", 3/4" 1", 1-1/2" 2"	2 Grams To 5 oz.	2"	1"	21"	6"	16"
TC 6x28-06	2-1/4" 3"	3/4", 1" 1-1/2", 2", 3"	1/4 oz. To 5 oz.	3"	1" 2"	28"	6"	16"
TC 8x28-06	2-1/4" 3"	3/4", 1" 1-1/2", 2" 3"	1/4 oz. To 17 oz.	3"	1" 2"	39"	8.25"	16"
TC 11x39-09	3" 3-1/2"	3/4", 1" 1-1/2", 2" 3", 3-1/2"	1/4 oz. To 41 oz.	3"	2" 2-1/2"	39"	10.75"	16"
TC 11x48-12	3" 3-1/2"	1", 1-1/2" 2", 3" 3-1/2", 4"	1/4 oz. To 72 oz.	3"	2" 2-1/2"	48"	10.75"	16"
TC 12x41-09	3" 3-1/2" 4"	1-1/2", 2" 3", 3-1/2" 4", 5", 6"	1 oz. To 130 oz.	3" 4"	2" 2-1/2" 3"	41"	12.5"	16"
TC 12x51-12	3" 3-1/2" 4"	1-1/2", 2" 3", 3-1/2" 4", 5", 6"	1 oz. To 170 oz.	3" 4"	2" 2-1/2" 3"	51"	12.5"	16"

UTILITY REQUIREMENTS

A= Air Pressure, 80 PSI min
1/4 NPT Hookup 20 SFM at 40 cycles/second (Average Model)

MINI SPECIFICATION

Shall be a Model TC___ Piston Filler/Transfer Pump. Base made of corrosion resistant 316 stainless, reinforced. Twin air cylinders for Rotary Valve Drive. Thread screw for accurate weight adjustments. Four Way Valve controlled pneumatics. Foot Pedal Activation. 3 1/2 Inch Locking Swivel Castors. Dairy Clamps for quick setup and breakdown. No Electricity Required.



EQUIPMENT, INC

5301 Industrial Blvd., Suite 200
Fridley, MN 55421

Phone: (763) 574-7475
Fax: (763) 574-7472
Email: martytucs@tucsequipment.com