



EQUIPMENT, INC

FOOD SERVICE LINE OF QUALITY PRODUCTS

MODEL: THPT-HS-x

Item _____

**CONTINUOUS LINEAR RAPID CHILLER TANK SYSTEM
CHILL TANK DATA AND SELECTION MENU**

Chill tanks are sized by cooling capacity per hour in pounds of product per hour. Available floor space will also dictate the size:

Example: 200 Gal Kettle Batch per hour

Single Lane = 41.5" wide x 42" deep x 18' long C/W conveyor

Double Lane = 63" wide x 42" deep x 20' long C/W conveyor (2 Kettles/hr)

Triple Lane = 93" wide x 42" deep x 20' long C/W conveyor (3 Kettles/hr)

Tanks and their cooling coils are shipped directly from the factory with the properly sized condenser/compressor package furnished by Tucs, or other, and ready for field connection by a reliable refrigeration contractor.

SINGLE LANE

CAP. GAL/HR	LANE WIDTH	OD WIDTH	LENGTH B	WATER CAP.	TOTAL OP. WT.	WT/LEG
60	See 100					
100	36"	41.5"	10'	570	6165	1000
150	36"	41.5"	14'	850	9000	1000
200	36"	41.5"	18'	1130	12,000	1000
300	36"	41.5"	26'	1680	17,600	1000
400	36"	41.5"	34'	2230	23,300	1000

DOUBLE LANE

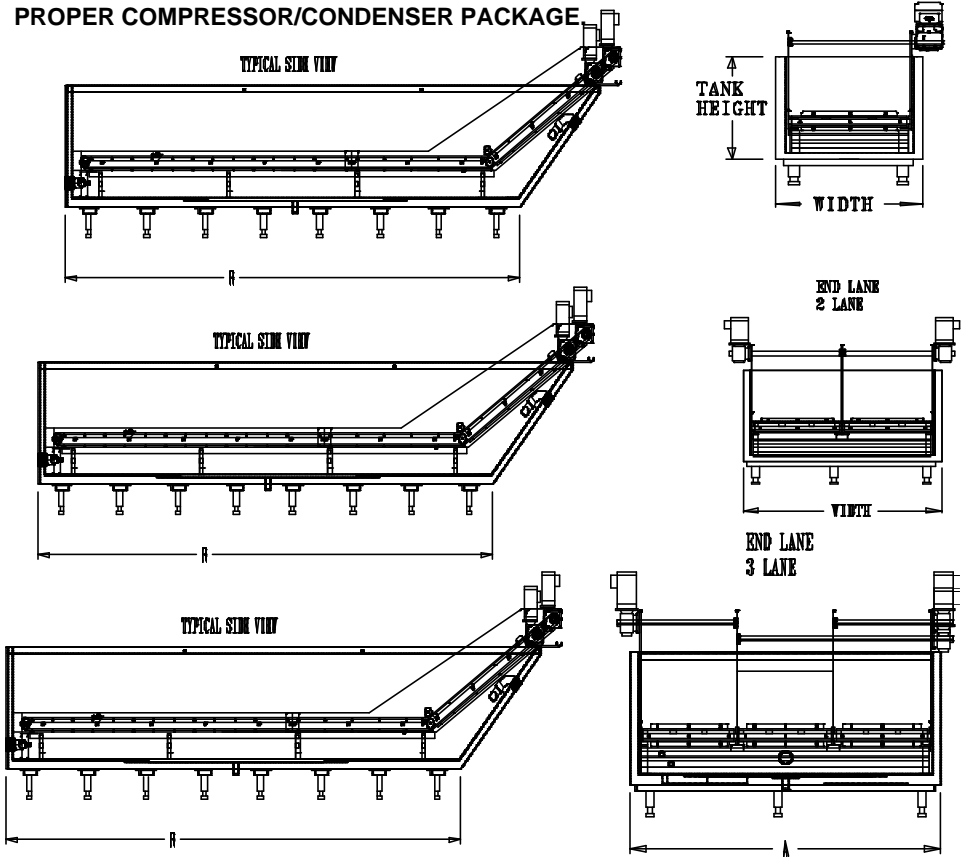
CAP. GAL/HR/LANE	LANE WIDTH	OD WIDTH A	LENGTH B	WATER CAP.	TOTAL OP. WT.	WT/LEG
60	See 100					
100	29"	63"	12'	1150	11,700	1400
150	29"	63"	16'	1600	16,128	1400
200	29"	63"	20'	2040	20,500	1400
300	29"	63"	28'	2930	29,300	1400
400	29"	63"	36'	3820	38,120	1400

TRIPLE LANE

CAP. GAL/HR/LANE	LANE WIDTH	OD WIDTH A	LENGTH B	WATER CAP.	TOTAL OP. WT.	WT/LEG
60	See 100					
100	29"	93"	12'	1740	17,640	1850
150	29"	93"	16'	2420	24,400	1850
200	29"	93"	20'	3100	31,000	1850
300	29"	93"	28'	4450	44,400	1850
400	29"	93"	36'	5800	57,700	1850

NOTE: All tanks have 6" clearance floor to tank bottom and 48" over all height of rim from floor. All tank heights are 42" tall.

CONSULT FACTORY FOR BEST CONFIGURATION BASED ON PRODUCT LOAD/HOUR & FLOOR SPACE AND PROPER COMPRESSOR/CONDENSER PACKAGE.



AIA 11400—FOOD SERVICE EQUIPMENT



EQUIPMENT, INC 5301 Industrial Blvd., Suite 200
Fridley, MN 55421

FORM B-CHILL2 3/1/02

